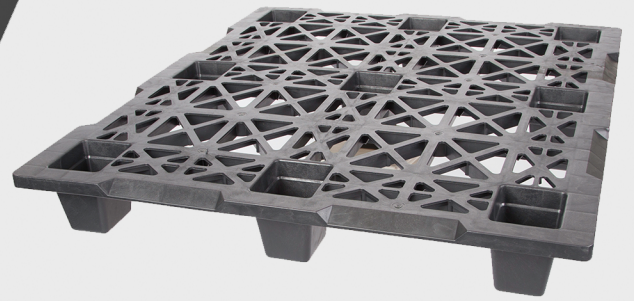




GREYSTONE



EXPORT NESTABLE 48" X 40"

FEATURES & BENEFITS

- 100% RECYCLED PLASTIC (HDPE)
- INJECTION MOLDED
- SANITARY & EASY TO CLEAN
- STRONG & LONG LIFESPAN
- REUSABLE & RECYCLABLE
- IMPACT & WEATHER RESISTANT
- STACKABLE & CONVEYABLE
- 4 WAY ENTRY & SPACE EFFICIENT
- ISPM-15 EXEMPT



PROTECTS



COST EFFICIENT

SUSTAINABLE



SPECIFICATIONS	IN / LB	MM / KG
LENGTH (L)	48	1,220
WIDTH (W)	40	1,016
HEIGHT (H)	5.5	140
WEIGHT	17	7.7
STATIC LOAD CAPACITY	5,000	2,268
DYNAMIC LOAD CAPACITY	2,000	907
RACKING CAPACITY	N/A	N/A
53' TRAILER QTY	2,100	
40' SEA CONTAINER	1,280	



GREYSTONE MANUFACTURING
2601 SHORELINE DRIVE
BETTENDORF, IA 52722
WWW.GREYSTONELOGISTICS.COM



MARILYN CARTER
GM & INSIDE SALES
563-332-0052
MMC@GSTMFG.COM

Greystone guidelines are established from internal testing and does not constitute any warranty related to each customer's application. All Greystone products are sold with the understanding that the customer will validate for themselves the suitability of the product for their specific application. As each product application is unique, the customer assumes all risks associated with the determination and actual use of the pallet.



**N
E
S
T
A
B
L
E**



48X40 EXPORT NESTABLE

SPECIFICATIONS	IN / LB	MM / KG
LENGTH (L)	48	1,220
WIDTH (W)	40	1,016
HEIGHT (H)	5.5	140
WEIGHT	17	7.7
STATIC LOAD CAPACITY	5,000	2,268
DYNAMIC LOAD CAPACITY	2,000	907
RACKING CAPACITY	N/A	N/A
53' TRAILER QTY	2,100	
40' SEA CONTAINER	1,280	



NESTABLE 3-RUNNER

SPECIFICATIONS	IN / LB	MM / KG
LENGTH (L)	48	1,220
WIDTH (W)	40	1,016
HEIGHT (H)	6.25	159
WEIGHT	24	11
STATIC LOAD CAPACITY	5,000	2,268
DYNAMIC LOAD CAPACITY	1,500	681
RACKING CAPACITY	N/A	N/A
53' TRAILER QTY	510	
40' SEA CONTAINER	N/A	

MARILYN CARTER
 GM & INSIDE SALES
 563-332-0052
 MMC@GSTMFG.COM